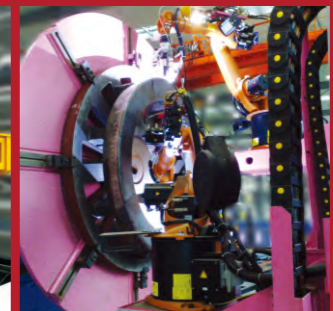


HUAHENG

HUAHENG

机器人 就是一种标准工业产品
在我们手中，它具有 **生命力**……



机器人 事业部



2021年8月版

长沙华恒机器人系统有限公司

地址：湖南浏阳高新技术产业开发区鼎盛路 21 号
电话：0731-88289175
传真：0731-82723200
网址：www.huahengrobot.com

昆山华恒焊接股份有限公司

地址：江苏省昆山市博士路1588号
电话：0512-81866666

HUAHENG
HUAHENG WELDING CO., LTD.
www.huahengweld.com

昆山华恒焊接股份有限公司
长沙华恒机器人系统有限公司

企业简介

COMPANY INTRODUCTION

昆山华恒焊接股份有限公司，是中国最早从事焊接自动化装备研发制造的国家级高新技术企业，是一个在弧焊工艺技术、机器人系统集成、自动化和智能制造领域提供整体解决方案的领先企业。

华恒在昆山、徐州、长沙和成都建有生产基地，拥有江苏省焊接自动化装备高新技术研究重点实验室、江苏省机器人自动化装备工程实验室和企业博士后科研工作站，先后承担并完成国家“863”计划、国家重大科技专项、国家火炬计划和国家重点新产品计划等一批国家级研发项目，是中国机器人系统集成和焊接自动化领域的主力军。

华恒产品广泛应用于工程机械、军工航天、能源动力、海洋工程、船舶制造、铁路机车、化工、核电、五金轻工等各个领域，并出口北美、欧洲、南亚和东南亚等世界各地。

HUAHENG WELDING CO., LTD is a national HIGH-TECH enterprise, and one of the earliest engaged in developing and manufacturing automatic welding equipment in China. As a leading company, we supply complete solutions in arc welding process, robot integration and automatic / intelligent manufacturing.

HUAHENG has 4 production bases located in Kunshan, Xuzhou, Changsha and Chengdu. The Kunshan headquarter has automatic welding equipment laboratory of Jiangsu Province, robot automatic equipment and engineering laboratory of Jiangsu Province and enterprise postdoctoral workstation. The company has undertaken and completed "863" program, national major science and technology project, national torch plan, national key new product plan, etc. HUAHENG has become the national main force of robot system integration and welding automation.

HUAHENG products are widely applied in fields and industries as construction machinery, military, aerospace, energy, ocean engineering, ship building, locomotive, chemical, nuclear power, and so on. HUAHENG products are also widely installed in North America, Europe, South Asia and Southeast Asia.



总部



昆山基地



徐州基地



长沙基地



四川基地

目录

CONTENTS

- 01 企业简介 COMPANY INTRODUCTION
- 03 柔性制造 FMS
- 07 先进制造&智能焊接 ADVANCED MANUFACTURING & INTELLIGENT WELDING
- 09 喷涂 PAINTING
- 10 打磨抛光去毛刺 GRINDING POLISHING DEBURRING
- 11 冲压 PRESSING
- 12 点焊 SPOT WELDING
- 13 搬运及装配 HANDLING AND ASSEMBLY
- 14 切割 CUTTING
- 15 煤矿机械 MINING MACHINERY
- 16 军工及航天 MILITARY AND AEROSPACE INDUSTRY
- 17 铁路机车 LOCOMOTIVE INDUSTRY
- 18 海工及港机 OCEAN ENGINEERING AND PORT MACHINERY
- 19 能源及动力 ENERGY INDUSTRY AND POWER GENERATION
- 20 管道 PIPE MAKING
- 21 五金及轻工 HARDWARE AND LIGHT INDUSTRY
- 23 经济型机器人工作站 ERW ECONOMIC ROBOT WELDING
- 25 标准周边设备 STANDARD PERIPHERAL EQUIPMENTS

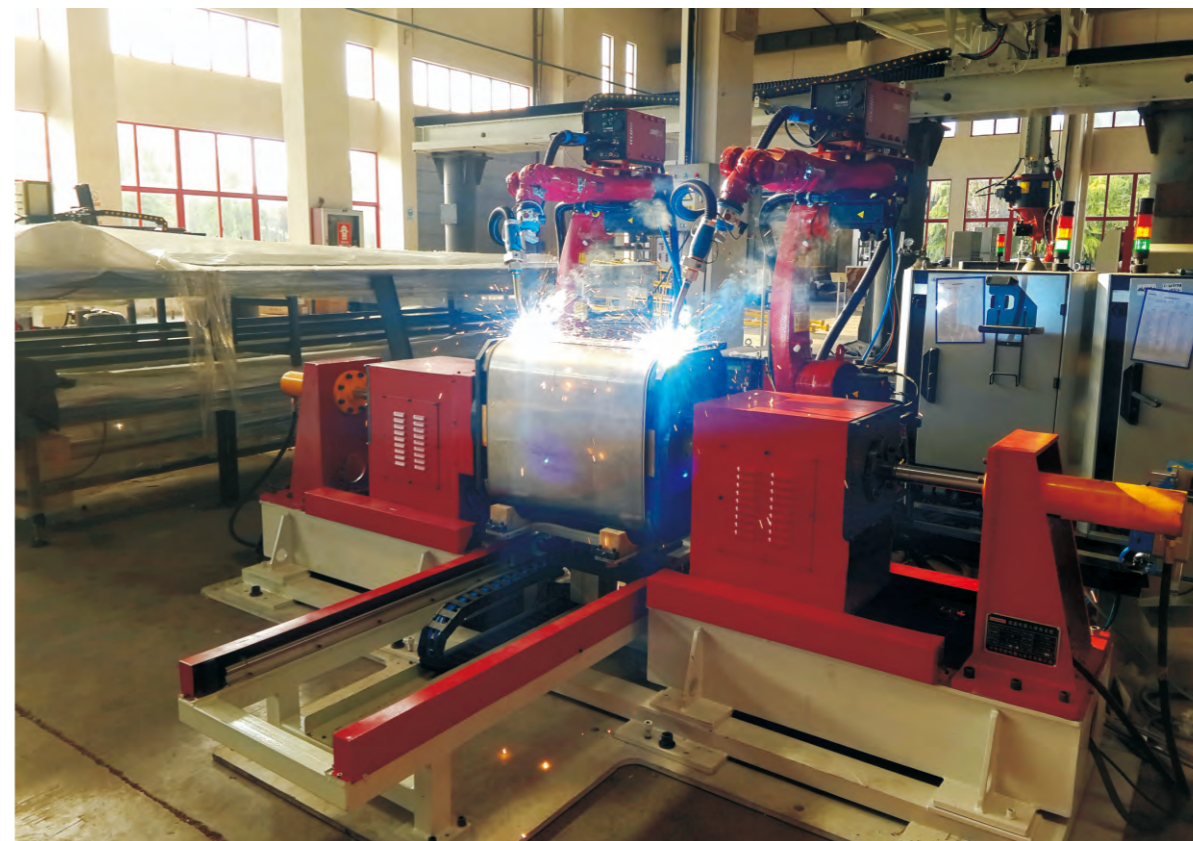
柔性制造

FMS

- 生产工序有机结合——生产无停顿
- 节拍固定——精确的生产计划
- 车间最有效利用——单位面积最大产值
- 无人/少人生产——单位人工最大产值
- 在制品数量减少——不断优化的财务数据



SCR尾气处理装置装配焊接生产线





船用换热器生产线



叉车门架生产线



汽车举升机生产线



铝合金模板智能焊接线



叉车油箱生产线

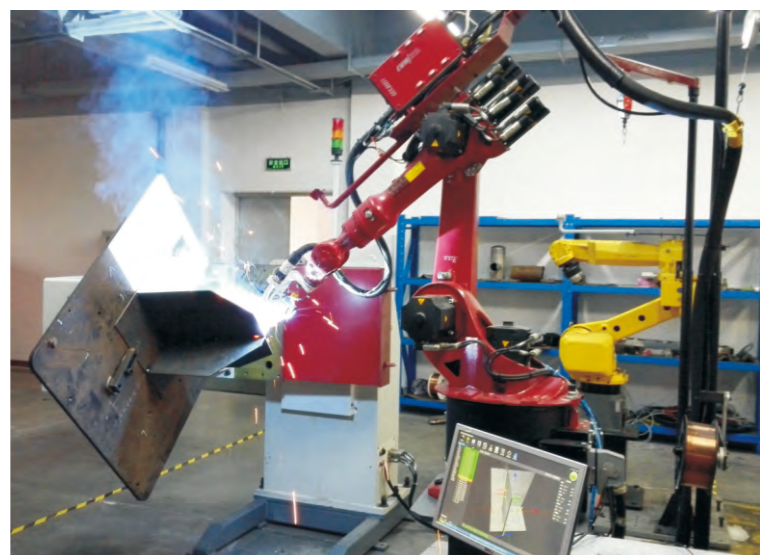


电梯门板全自动生产线



先进制造&智能焊接

ADVANCED MANUFACTURING & INTELLIGENT WELDING

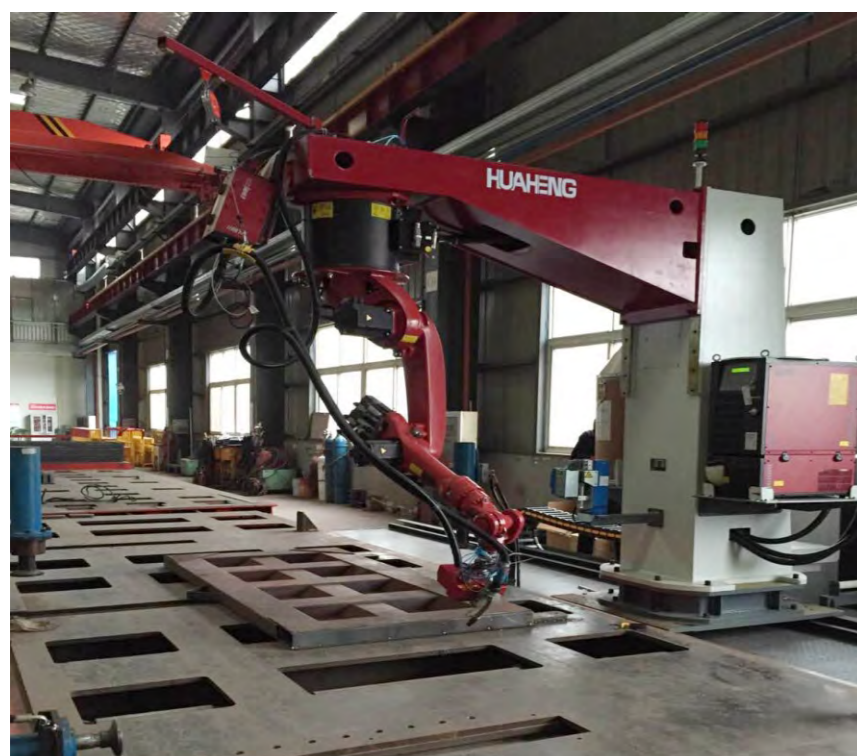


- 激光视觉应用
- 智能图形化编程
- 友好定制界面

塔脚智能焊接

无需示教，单件自动化！

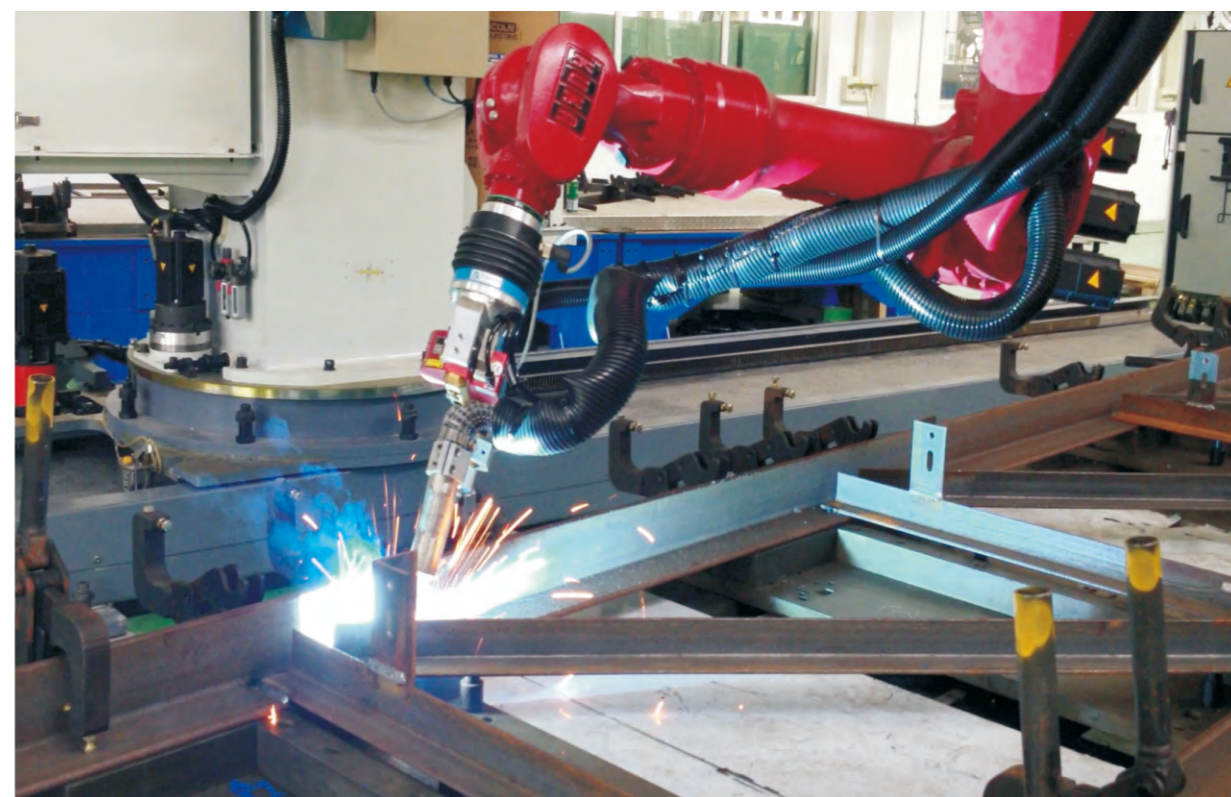
极易上手，人人会用！



车厢板智能焊接



桁架智能焊接



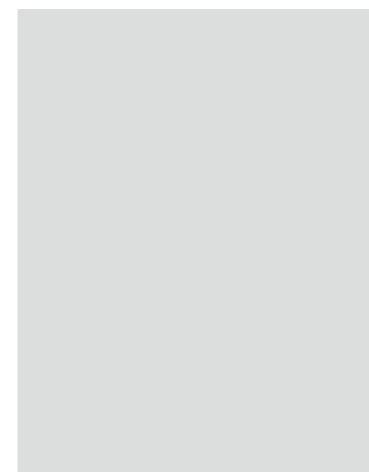
喷涂 PAINTING



国内首台自主知识产权喷涂机器人



打磨抛光去毛刺 GRINDING POLISHING DEBURRING



打磨



去毛刺



抛光



倒角

冲压 PRESSING



冲压生产线



机器人与大型冲压设备的完美结合，高效、安全、精确。

点焊 SPOT WELDING



汽车后尾点焊



座椅骨架点焊

搬运及装配

HANDLING AND ASSEMBLY



大型抓取机械手



装配生产线



机器人激光切割

切割 CUTTING



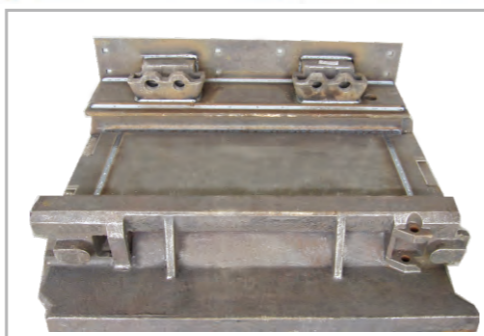
机器人封头智能切割

开孔轨迹自动生成、开孔轨迹自动修正、真正实现单件自动化！

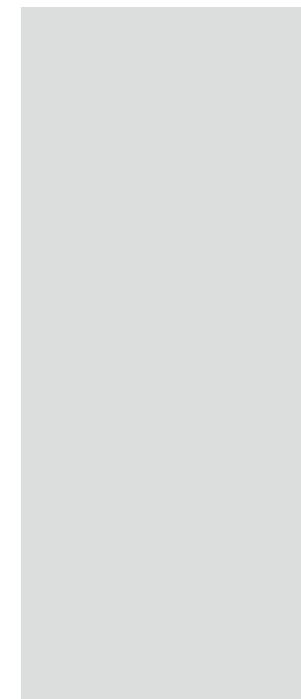
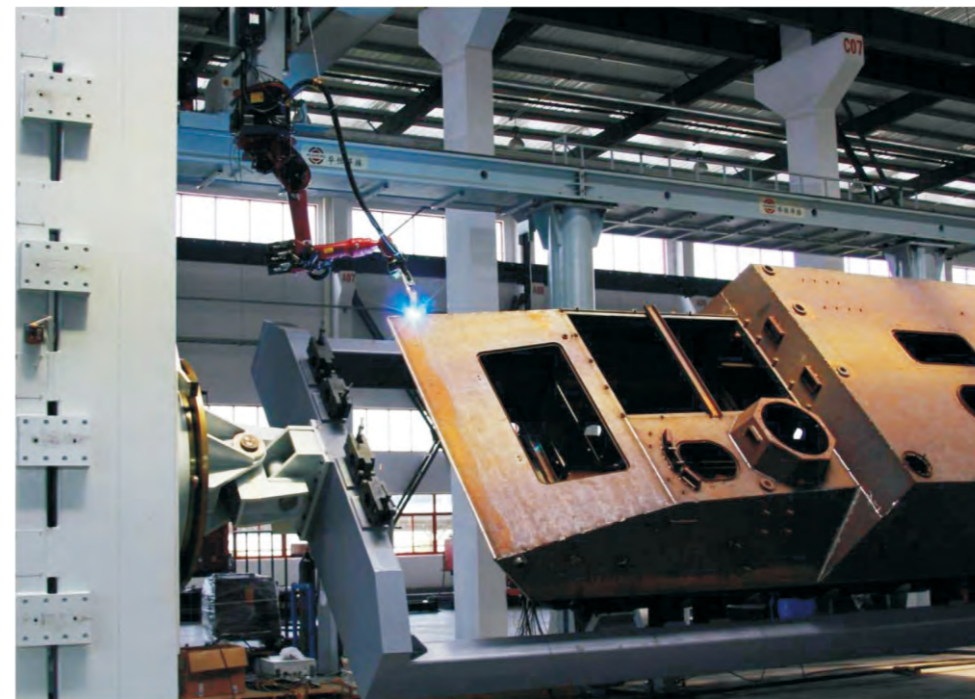
煤矿机械
MINING MACHINERY



大、厚而**重**，驾轻就**熟**！



十年磨一剑，
方能**从容面对**！



军工及航天
MILITARY AND AEROSPACE INDUSTRY



铁路机车
LOCOMOTIVE INDUSTRY

华恒出品，
足以承载安全！

构架梁机器人焊接



侧梁机器人焊接

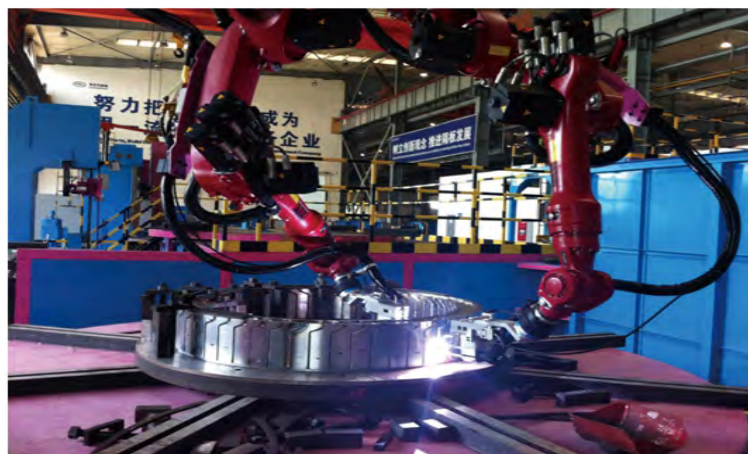


海工及港机
OCEAN ENGINEERING AND
PORT MACHINERY

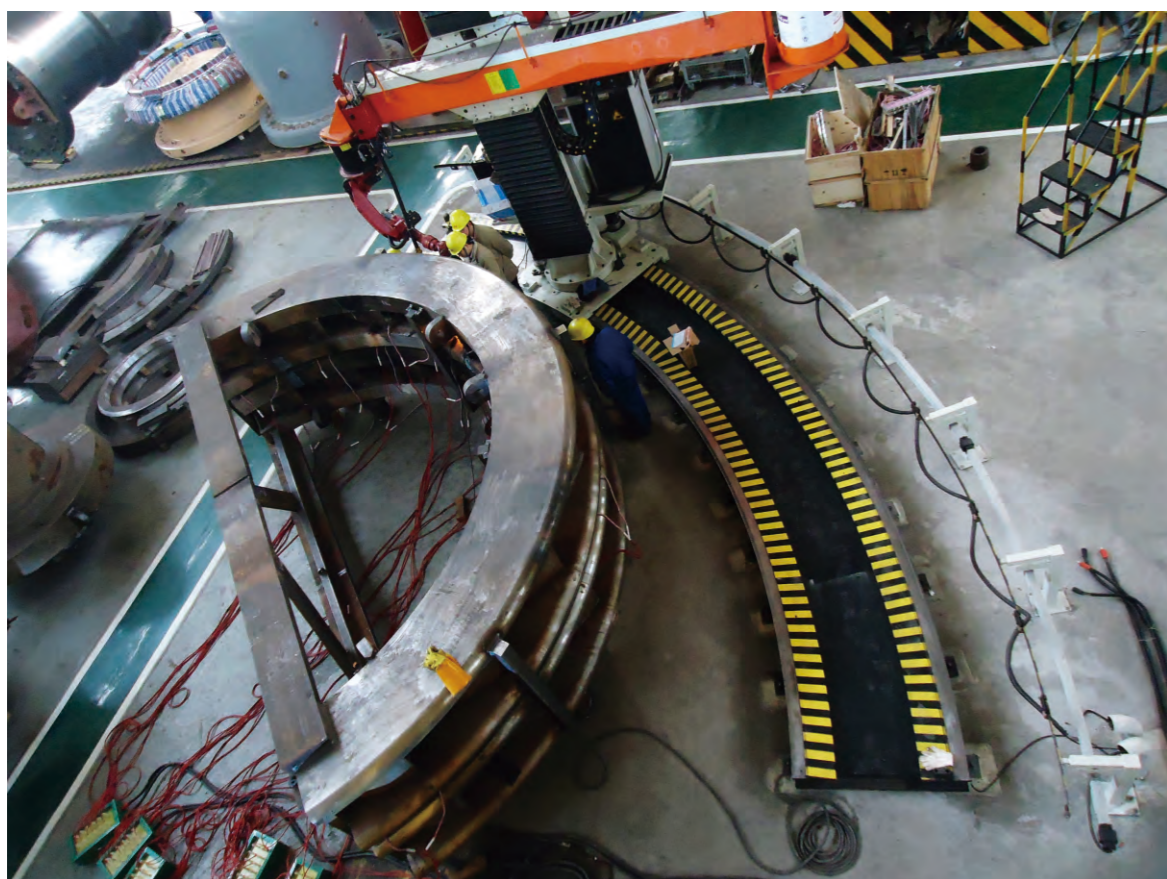


海纳百川
岂止于大！

高端重型装备，中国制造

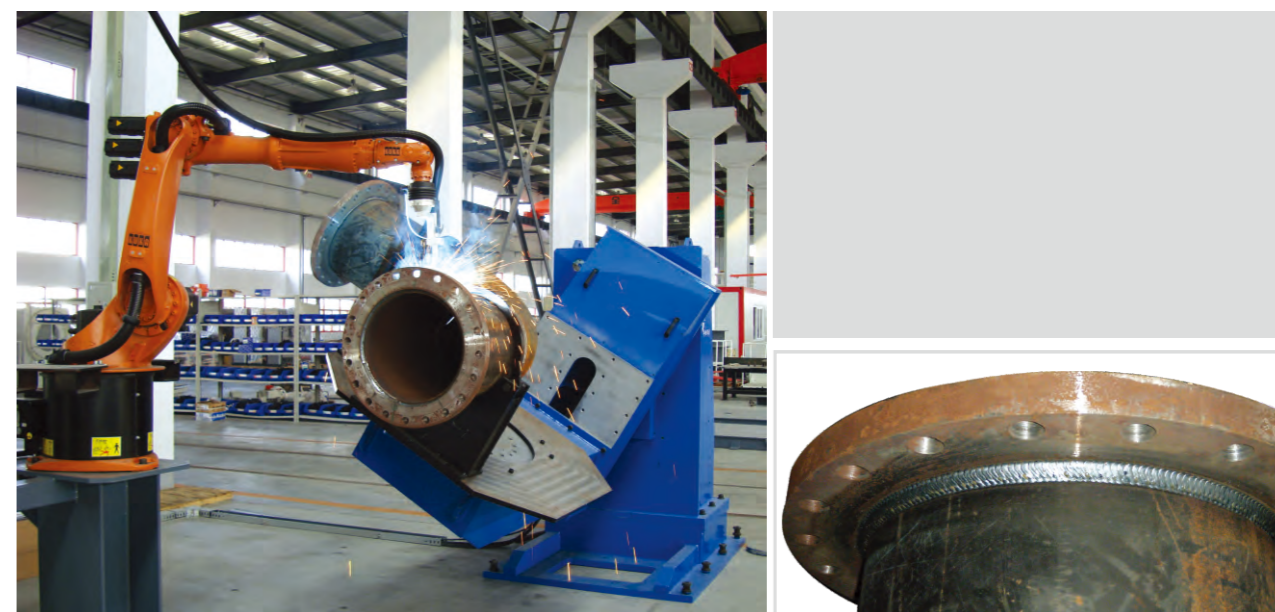
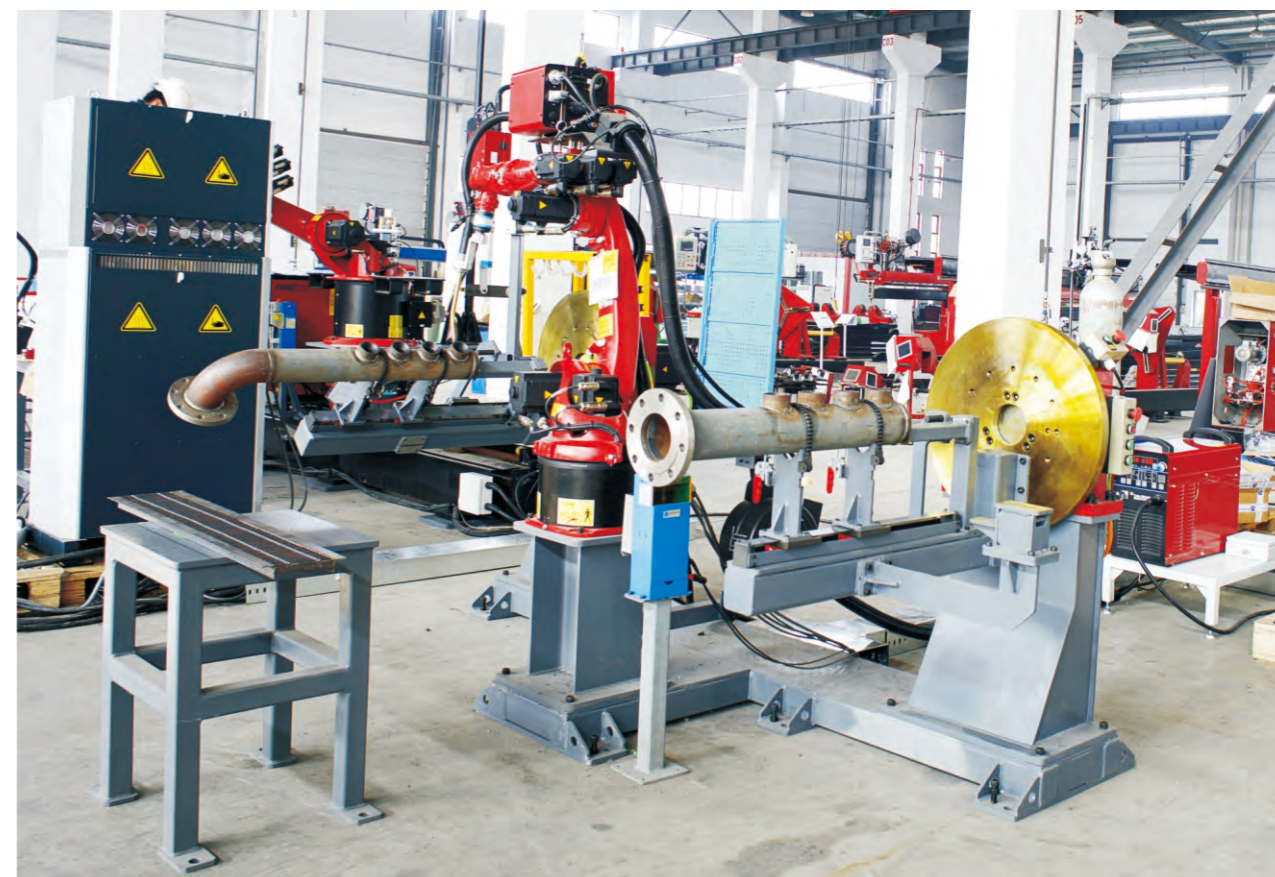


汽轮机叶栅机器人焊接



水轮机固定导叶机器人焊接

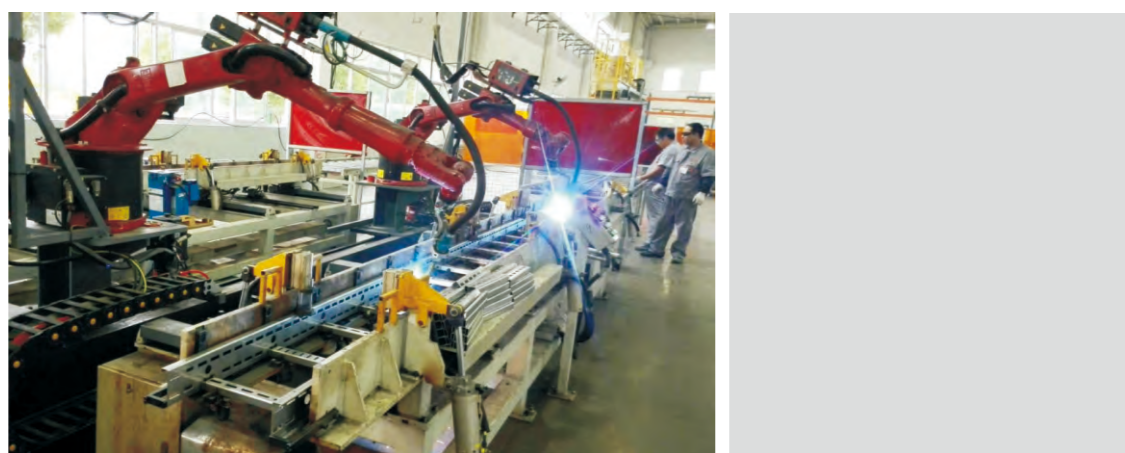
相贯线机器人焊接工作站



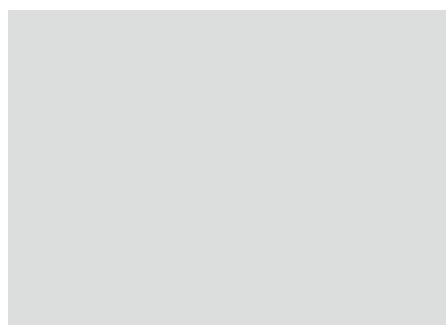
管法兰机器人焊接工作站

轻、小而薄
一样精彩

桥架焊接



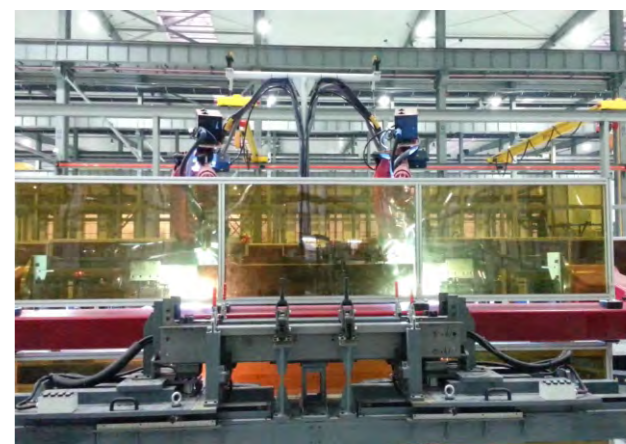
箱体焊接



构件焊接

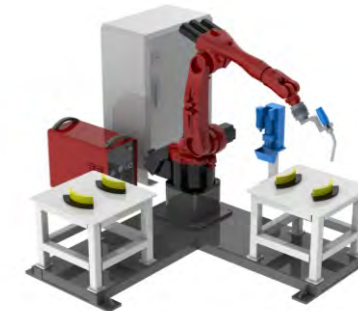
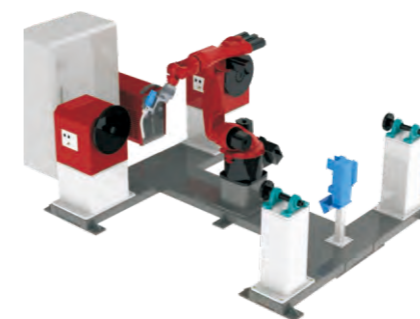
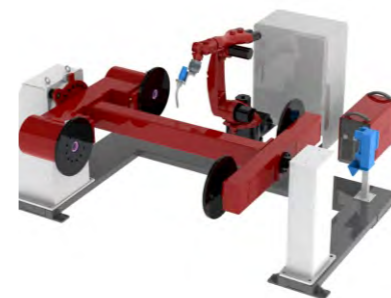
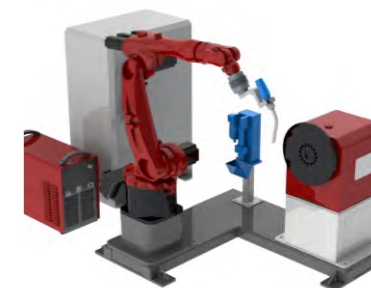
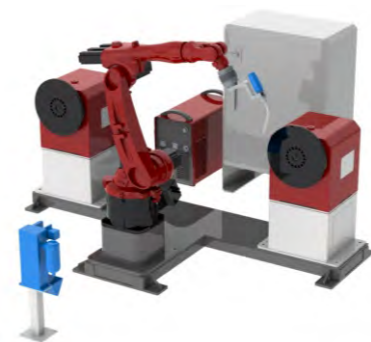
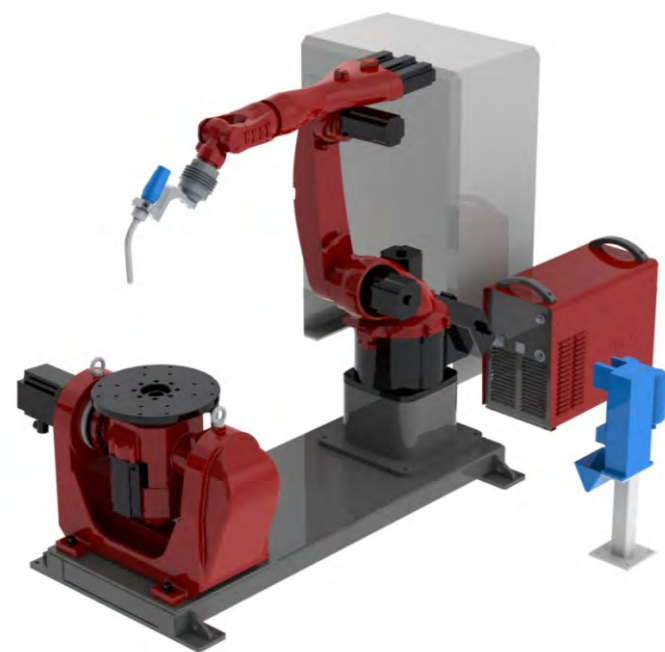


电梯部件焊接



经济型机器人工作站 ERW

ECONOMIC ROBOT WELDING



标准周边设备

STANDARD PERIPHERAL EQUIPMENTS



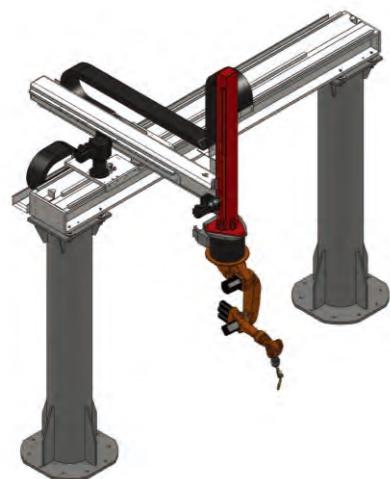
可移动升降C型支撑 HCS03-12

移动行程 (Left-right stroke) : 1500~15000mm
升降行程 (Up-down stroke) : 500~3000mm



直线滑轨HLV

行程范围: 1500~15000mm
Stroke: 1500~15000mm

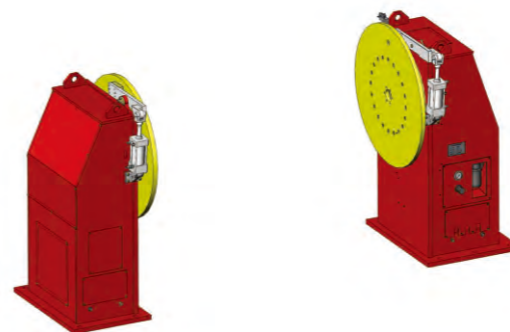
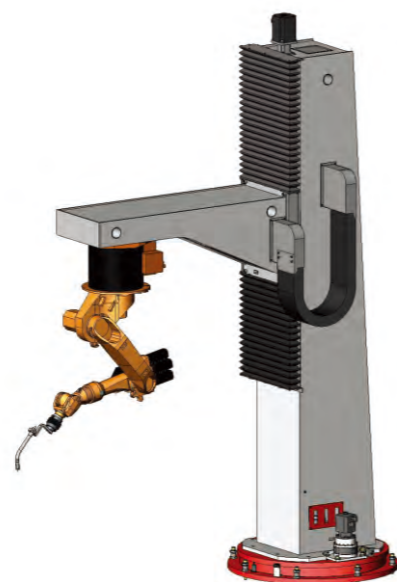


1-3轴机器人龙门架 HLV03-123

X轴行程: (X-axis stroke) : 1500~15000mm
Y轴行程 (Y-axis stroke) : 500~3000mm
Y轴行程 (Z-axis stroke) : 1000~2250mm

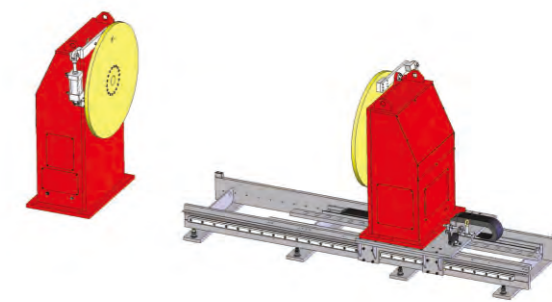
可旋转升降C型支撑 HCS03-23

旋转范围 (Rotation) : 360度
升降行程 (Up-down stroke) : 500~3000mm



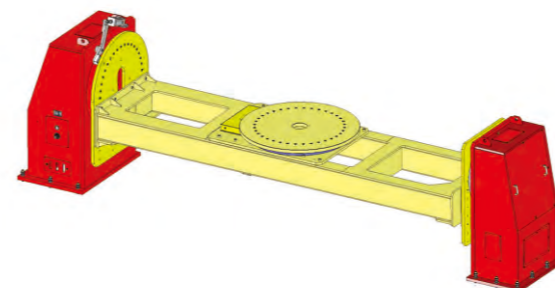
头尾架单轴变位机 HDV

最大载荷 (Maximum payload) (kg) :
1000, 2500, 5000, 10000, 20000



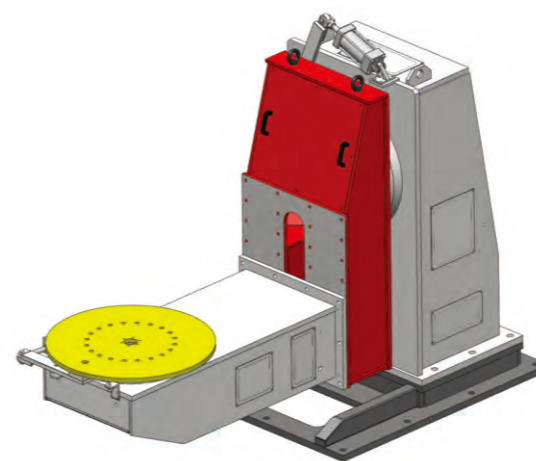
头尾架单轴变位机 HDVv

最大载荷 (Maximum payload) (kg) :
1000, 2500, 5000, 10000, 20000



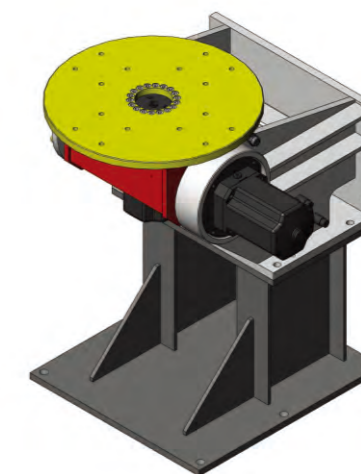
2轴头尾架机器人变位机 HDVS

最大载荷 (Maximum payload) (kg) :
2500, 5000, 10000, 20000



L型变位机 HDS

最大载荷 (Maximum payload) (kg) :
1000, 2500, 5000



两轴变位机 HDK

最大载荷 (Maximum payload) (kg) :
500, 1000, 2500, 5000