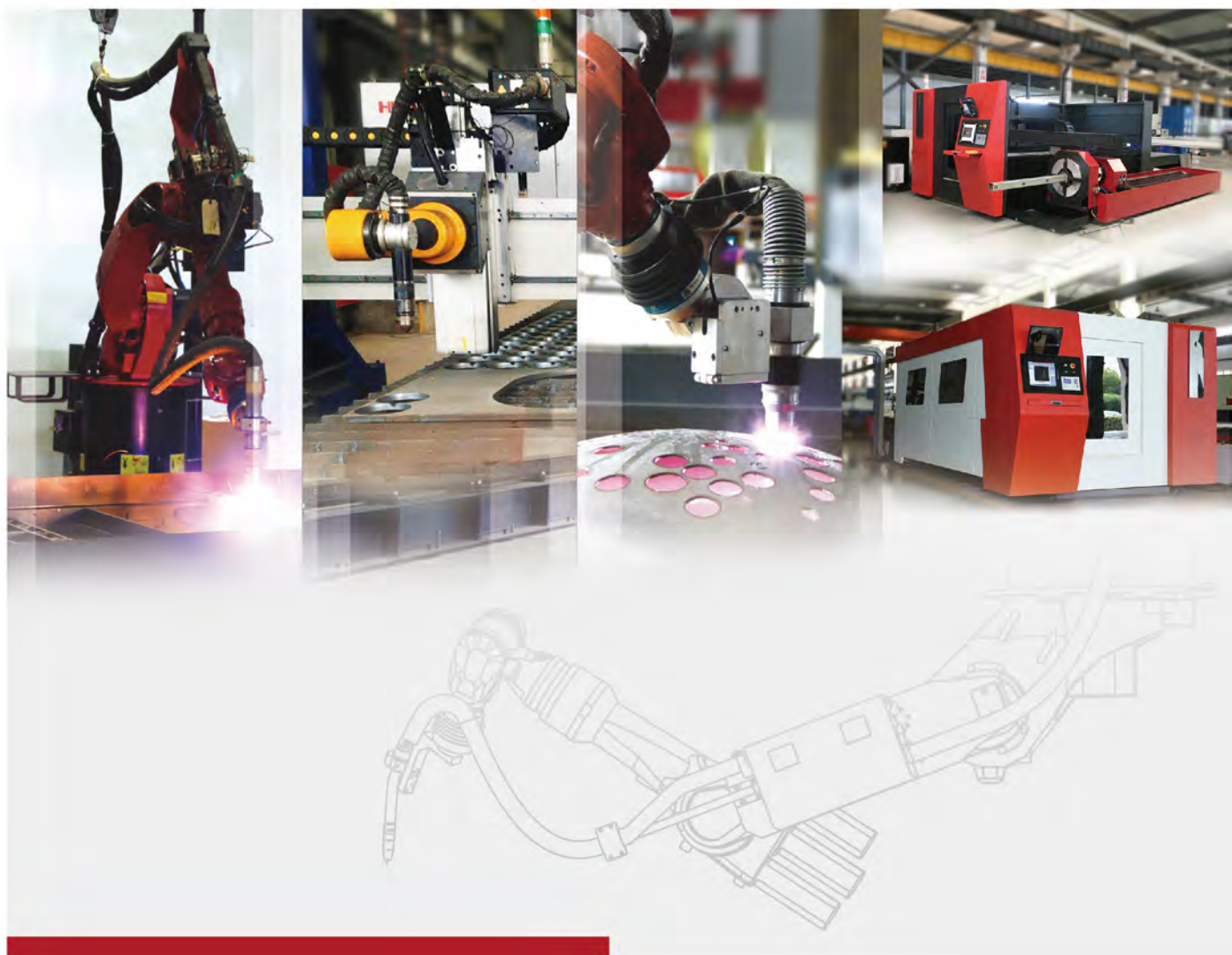


HUAHENG

AUTOMATIC CUTTING SYSTEMS 自动化切割系统



昆山华恒切割系统有限公司
Kunshan Huaheng Cutting System Co., LTD.



企业简介

Company Introduction

昆山华恒焊接股份有限公司成立于1995年，总部位于江苏省昆山市，是国内最早从事焊接自动化装备研发制造的国家火炬计划重点企业，致力于在弧焊、热切割、工业机器人、自动化与智能化装备领域为客户提供行业领先的一体化解决方案。

以技术创新为驱动力，经过近三十年的发展，公司目前已形成集设计、研发、工艺技术、单元产品、成套装备、自动化生产以及售后服务在内的完整产业链，成为智能制造领域在技术、品牌、人才、服务、质量控制、项目经验及等方面具有较强竞争优势以及国内少数对机器人自动化装备核心模块具有完整自主研发与生产能力的企业。

公司在昆山、徐州、长沙建有总占地面积逾18万平米的生产制造基地，主要产品包括自动化焊接生产线、智能物流仓储系统和自动化焊接与切割装备与行星减速器等。业务涉及方案规划、研发、设计、成套设备生产、装配、调试集成、销售等各环节，可提供整体解决方案的交钥匙工程服务。

公司产品广泛应用于工程机械、船舶制造、轨道交通、航空航天、海洋工程、军工核电等高端装备制造领域和石油化工、食品医疗等国民经济重要行业，并出口美国、欧洲、印度、巴西和东南亚等国家与地区。

作为全球自动化焊接行业的领跑者和中国工业智能制造的践行者，华恒秉承“华外慧中，持之以恒”的文化理念，致力于创造民族自动化焊接世界品牌。



Kunshan Huaheng Welding Co., LTD., founded in 1995 and headquartered in Kunshan, Jiangsu Province, is the first national torch Program key enterprise engaged in the R&D and manufacturing of welding automation equipment in China. It is committed to providing customers with industry-leading integrated solutions in the fields of arc welding, thermal cutting, industrial robots, automation and intelligent equipment.

Driven by technological innovation, after nearly 30 years of development, the company has formed a complete industrial chain including design, research and development, process technology, unit products, complete sets of equipment, automated production and after-sales service. It has become one of the few enterprises in the field of intelligent manufacturing with strong competitive advantages in technology, brand, talent, service, quality control, project experience and other aspects, as well as complete independent research and development and production capacity for the core modules of robot automation equipment.

The company has a production and manufacturing base covering a total area of more than 180,000 square meters in Kunshan, Xuzhou and Changsha. The main products include automatic welding production line, intelligent logistics warehousing system, automatic welding and cutting equipment and planetary reducer. Business involves program planning, research and development, design, complete equipment production, assembly, debugging and integration, sales and other links, can provide turnkey engineering services of overall solutions.

The company's products are widely used in construction machinery, shipbuilding, rail transit, aerospace, ocean engineering, military, nuclear power and other high-end equipment manufacturing fields and important industries of national economy such as petrochemical, food and medical, and exported to the United States, Europe, India, Brazil and Southeast Asia and other countries and regions.

As the leader of the global automatic welding industry and the practitioner of industrial intelligent manufacturing in China, Huaheng adheres to the cultural concept of "hua wai hui zhong, chi zhi yi heng" and is committed to creating a national automatic welding brand in the world.

数控火焰等离子切割机

ProCut plasma & flame cutting machine



- 此款切割机是一种精密的重型数控切割机，该机型是高切割精度和生产效率的完美结合，可适用于火焰和等离子切割。
- Heavy-duty precision CNC cutting machine, which combines high cutting accuracy and high production efficiency, It is suitable for oxy-fuel and plasma cutting application.

技术参数

Technical Parameters

轨距 Track gauge(mm)	3000	3500	4000	4500	5000	6000	7000	8000
切割宽度* Cutting width (mm)	2200	2700	3200	3700	4200	5200	6200	7200
整机宽度* Overall width (mm)	4000	4500	5000	5500	6000	7000	8000	9000
驱动速度 Drive speed	12000mm/min							
割炬最多配置 Maximum torches configurable	6 (其中可配2个等离子 2 sets of plasma torches configurable)							
*会随割炬数量而变化 May vary with the qty. of torches								

数控回转头等离子切割机

ProCut Bevel



- ProCut Bevel 采用进口二轴回转头，整机实现五轴联动。回转头具有零点消间隙装置与防碰撞功能，水平方向工作旋转角度达 $\pm 50^\circ$ ，可以进行V、Y、I等各式坡口切割。
- Procut Bevel adopts imported two axis bevel head, and the whole machine realizes five axis linkage. The rotary head has zero clearance eliminating device and anti-collision function, and the horizontal working rotation angle is $\pm 50^\circ$. V, y, I and other groove cutting can be processed smoothly.

技术参数

Technical Parameters

旋转轴 (Axis)	A轴 (Head Axis)	B轴 (Torch Axis)
工位 (Working Position)	水平(Horizontal)	
回转头 (Tilting Head)	$\pm 90^\circ$ max	$\pm 90^\circ$ max
	$\pm 50^\circ$ work	$\pm 50^\circ$ work
旋转轴转速 (Axis Speed)	40rpm	29rpm
旋转轴额定扭矩 (Axis Rated Torque)	124Nm	144Nm
伺服驱动 (Motor and Drive)	松下Panasonic	
	5000rpm max	6000rpm max
防碰撞 (Anti-shock System)	磁吸式Magnetic	
割炬安装方式 (Torch Installation)	夹持式 (Torch Clamp)	

经济型火焰等离子切割机

EcoCut Plus



- EcoCut Plus是华恒切割系统针对市场需求研发的一款改进型中型多功能火焰等离子切割机，适合于中小企业多种加工使用，具有非常高的性价比。
- EcoCut plus is an improved medium-sized multi-functional flame plasma cutting machine developed by Huaheng cutting system according to the market demand. It is suitable for various processing of small and medium-sized enterprises and has a very high cost performance ratio.

技术参数

Technical Parameters

轨距Track Gauge (mm)	3000	3500	4000	4500	5000	5500	6000	7000
有效切割范围 Effective cutting rang(mm)	2000	2500	3000	3500	4000	4500	5000	6000
工作长度 Working length	轨长Track length-2000mm							
驱动速度 Drive speed	12000mm/min							
割炬最多配置 Maximum torches configurable	6(其中可配2个等离子2 sets of plasma torches configurable)							

集成数控切割机

FineCut plasma cutting machine



- 此款切割机是一种高速、精密、等离子数控切割机，采用一体式模块化结构，使安装迅速、方便。配抽烟工作台、除尘器，以达到环保排放要求。
- High speed, high accuracy CNC plasma Cutting machine, with compact modular construction for easy and quick installation. The optional fume extraction table and collector help to meet the environment protection standards.

技术参数

Technical Parameters

型号 Model	6020	4020	3015
有效切割范围 Effective cutting range(mm)	6000x2000	4000x2000	3000x1500
整机宽度 Overall width (mm)	3200	2000	
驱动速度 Drive speed	0-12000mm/min, 0-24000mm/min, 0-50000mm/min		
割炬最多配置 Maximum torches configurable	1		

中型光纤激光切割机

Medium fiber laser cutting machine



设备型号Model		FiberLaser3015M	FiberLaser6015M
有效范围 Effective cutting range	X轴X axis	1500mm	1500mm
	Y轴Y axis	3000mm	6000mm
	Z轴Z axis	100mm	100mm
最大速度 Rapid speed	X轴X axis	60000mm/min	60000mm/min
	Y轴Y axis	60000mm/min	60000mm/min
	X-Y 综合 X-Y coordinate	84000mm/min	84000mm/min
	Z轴Z axis	30000mm/min	30000mm/min
加速度Acceleration		0.6G	0.6G
定位精度Positioning accuracy		± 0.02mm/3000mm	± 0.02mm/3000mm
最大切割厚度Max. cutting thickness		根据具体切割材质以及选定的激光器功率而定 May vary upon the cutting materials and laser power	

重型光纤激光切割机

Heavy fiber laser cutting machine



- 华恒FiberLaser 系列产品是华恒切割系统有限公司采用最新技术研发设计的高性能光纤激光切割机。它采用国际先进的高品质光纤激光器，转换效率可高达30%，且维护与运行成本很低。结合高性能的控制系统与高精度的机械结构，能精细切割加工钢或铜铝等各类材质与厚度的板材与型材。具有高可靠性、高切割精度与效率、高性价比的优异特点。
- The FiberLaser series of high-performance fiber laser cutting machines are developed by Huaheng cutting systems Co., Ltd. with the latest technology. They use the internationally advanced fiber lasers with up to 30%'s conversion efficiency and very low maintenance and operating costs as well. Integrated with fine performance control systems and high-precision mechanical structure, they can finely cut sheets or profile of different thickness and metals, such as steels, copper and aluminum. They are popular by excellent characteristics of high reliability, high cutting accuracy and cost-effective.

设备型号Model		FiberLaser3015H 系列	FiberLaser4020H 系列	FiberLaser6020H 系列
有效范围 Effective cutting range	X轴X axis	1500mm	2000mm	2000mm
	Y轴Y axis	3000mm	4000mm	6000mm
	Z轴Z axis	300mm	300mm	300mm
最大速度 Rapid speed	X轴X axis	75000mm/min, (可选 86000/100000mm/min)		
	Y轴Y axis	75000mm/min, (可选 86000/100000mm/min)		
	X-Y 综合 X-Y coordinate	100000mm/min (可选120000mm/140000mm/min)		
	Z轴Z axis	30000mm/min		
加速度 Acceleration		1.0G~1.5G		
定位精度 Positioning accuracy		± 0.01mm/6000mm		
激光发生器(美国IPG/武汉锐科) Laser Generator (IPG, USA/ Raycus, Wuhan)		2000W, 3000W, 4000W, 6000W, 8000W, 10000W, 12000W……		
可选配项 Optional items		美国IPG或武汉锐科光纤激光发生器; 上海嘉强或德国普雷茨特自动调焦切割头; 交换切割台; 电源稳压器。 Laser power supply - IPG (USA) or Raycus(China); Auto focusing cutting head-Precitec or Raytools; exchange cutting tables; power regulator.		
最大切割厚度 Max. cutting thickness		根据切割的材料种类以及选定的激光器功率而定 May vary upon the cutting materials and laser power		

龙门式重型光纤激光切割机

Gantry fiber laser cutting machine



BeamTool



PRECITEC



IPG PHOTONICS



Raycus FIBER LASER



轨距 (mm) Track gauge(mm)	3000	3500	4000	4500	5000	5500	6000	6500
切割宽度 (mm) Cutting width (mm)	2000	2500	3000	3500	4000	4500	5000	5500
激光发生器(美国IPG/武汉锐科) Laser Generator-IPG(USA) or Raycus(China)	1000W,1500W,2000W, 3000W, 4000W, 6000W, 8000W, 10000W, 12000W……							
驱动速度 Driving speed	24000mm/min或50000mm/min							
可选配项 Optional items	美国IPG或武汉锐科光纤激光发生器; 上海嘉强或德国普雷茨特自动调焦切割头; 电源稳压器 Laser power supply - IPG (USA) or Raycus(China); Auto focusing cutting head-Precitec or Raytools;power regulator.							
最大切割厚度 Max. cutting thickness	根据切割的材料种类以及选定的激光器功率而定 Depends on material thickness and laser power							
轨距最大10000mm;切割长度=轨道长度-3000mm Max Track Span10000mm;Cutting Length=Track Length-3000mm								

大台面高精度高速龙门激光切割机

Large table high precision high speed gantry laser cutting machine



- 根据客户需求专业化定制，可配备管材切割系统
 - 加工大幅面板材得心应手，超长超宽，应付自如
 - 三个数控轴均采用滚动导轨副导向，高强度焊接钢梁，加工精度与效率兼顾
 - 金属中厚板切割工艺变革，节能环保，运行成本低，精度高，速度快
- It can be equipped with pipe cutting system according to customer's requirement
 - Processing large surface plate handy, super long and super wide, cope with freely
 - The three numerical control axes are guided by rolling guide rail, high strength welded steel beam, processing precision and efficiency
 - Metal plate cutting process reform, energy saving and environmental protection, low operating cost, high precision, fast speed

名称 Name	单位 unit	Fiberlase8000G	Fiberlase10000G	Fiberlase12000G
加工范围 Processing range	mm	8000 × 4000	10000 × 4000	12000 × 4000
X轴行程 X-axis stroke	mm	4050	4050	4050
Y轴行程 Y-axis stroke	mm	8050	10050	12050
加速度 Acceleration	G	1.0-1.5	1.0-1.5	1.0-1.5
定位精度 Positioning accuracy	mm	± 0.03	± 0.03	± 0.03
重复定位精度 Repeated positioning accuracy	mm	± 0.03	± 0.03	± 0.03
激光发生器功率 Laser generator power	W	1000--30000		

重型光纤激光管板切割机

Heavy duty fiber laser tube plate cutting machine



- 持续进化，成熟可靠，性能突出的高速光纤激光切割机
 - 双驱床身结构，高刚性轻量化横梁，管板两用，精益高效，品质始终如一
 - 薄板高速切割，中厚板高效率精密加工，智能化操作界面与切割专家参数库全面升级
 - 全能选手，提供最优的应用解决方案，更多规格、更高功率、更丰富选项
- Continuous evolution, mature and reliable, high-performance high-speed fiber laser cutting machine
 - Dual drive bed structure, high rigidity and lightweight crossbeam, dual use of tube and plate, lean and efficient, and consistent quality
 - High speed cutting of thin plates, efficient and precise machining of medium and thick plates, comprehensive upgrade of intelligent operation interface and cutting expert parameter library
 - All rounder, providing the best application solutions with more specifications, higher power, and richer options

名称 Name	单位 unit	Fiberlase3015GL	Fiberlase4020GL	Fiberlase6020GL
加工范围 Processing range	mm	3000 × 1500	4000 × 2000	6000 × 2000
X轴行程 X-axis stroke	mm	1550	2050	2050
Y轴行程 Y-axis stroke	mm	3050	4050	6050
切管行程 Cutting stroke	mm	6000	6000	6000
加速度 Acceleration	G	1.0-1.5	1.0-1.5	1.0-1.5
定位精度 Positioning accuracy	mm	± 0.03	± 0.03	± 0.03
重复定位精度 Repeated positioning accuracy	mm	± 0.02	± 0.02	± 0.02
激光发生器功率 Laser generator power	W	1000--30000		

大台面重型龙门式激光管板切割机

Large table heavy gantry laser tube plate cutting machine



- 根据客户需求专业化定制,可切割平板、圆管、方管、型材等
 - 加工大幅面板材得心应手, 超长超宽, 应付自如
 - 落地龙门结构, 高强度焊接钢梁, 加工精度与效率兼顾
 - 金属中厚板切割工艺变革, 节能环保, 运行成本低
- According to customer needs, specialized customization can cut flat plates, circular tubes, square tubes, profiles, etc
 - Processing large panel materials with ease, ultra long and ultra wide, easy to handle
 - Floor mounted gantry structure, high-strength welded steel beam, balancing machining accuracy and efficiency
 - The transformation of metal plate cutting process is energy-saving and environmentally friendly, with low operating costs

名称 Name	单位 unit	Fiberlase8000HL	Fiberlase10000HL	Fiberlase12000HL	管材
加工范围 Processing range	mm	8000 × 4000	10000 × 4000	12000 × 4000	Φ 20-400
X轴行程 X-axis stroke	mm	4050	4050	4050	400
Y轴行程 Y-axis stroke	mm	8050	10050	12050	9000
加速度 Acceleration	G	1.0-1.5	1.0-1.5	1.0-1.5	1.0-1.5
定位精度 Positioning accuracy	mm	± 0.03	± 0.03	± 0.03	± 0.03
重复定位精度 Repeated positioning accuracy	mm	± 0.03	± 0.03	± 0.03	± 0.03
激光发生器功率 Laser generator power	W	1000--30000			

龙门式机器人激光切割机

Gantry robotic fiber laser cutting machine



- 华恒Fiberlaser龙门式机器人激光切割机采用先进的三轴机械手臂与KMC数控系统，集众多功能于一身，具有二维与三维切割功能，其加工柔性大，拓展性强，精度高，性能稳定可靠，可广泛应用于车辆制造行业壳体件三维切割等加工。
- Huaheng gantry robotic fiber laser cutting machine adopts advanced three-axis mechanical arm and KMC numerical control system, integrates many functions in one, and has two-dimensional and three-dimensional cutting functions. It has large processing flexibility, strong expansibility, high precision, stable and reliable performance, and can be widely used in three-dimensional cutting of shell parts in vehicle manufacturing and other industries.

轨距 (mm) Track gauge(mm)	3000	3500	4000	4500	5000	5500	6000	6500
切割宽度 (mm) Cutting width (mm)	2000	2500	3000	3500	4000	4500	5000	5500
激光发生器(美国IPG/武汉锐科) Laser Generator-IPG(USA) or Raycus(China)	1000W,1500W,2000W, 3000W, 4000W, 6000W, 8000W, 10000W, 12000W……							
驱动速度 Driving speed	24000mm/min或50000mm/min							
可选配项 Optional items	美国IPG或武汉锐科光纤激光发生器; 上海嘉强或德国普雷茨特自动调焦切割头; 电源稳压器 Laser power supply - IPG (USA) or Raycus(China); Auto focusing cutting head-Precitec or Raytools;power regulator.							
最大切割厚度 Max. cutting thickness	根据切割的材料种类以及选定的激光器功率而定 Depends on material thickness and laser power							
轨距最大10000mm;切割长度=轨道长度-3000mm Max Track Span10000mm;Cutting Length=Track Length-3000mm								

数控相贯线切割机

PipeCut cutting machine



- 该系列数控相贯线切割机是一种对钢管和有色金属管子的结合处相贯线孔、相贯线端部、弯头（虾米节）进行自动计算和切割的设备。该机广泛运用于建筑、化工、造船、工程机械、冶金、电力等行业的管道结构件的切割加工。数控相贯线切割机能十分方便地切割加工此类工件，无需操作计算、编程，只需输入管道相贯系统的管子的相贯线、相贯线孔及焊接坡口。

This intersecting line cutting machine can automatically calculate and cut the profiles of intersection position, profile position edge, elbow, etc. It is mainly applied to the processing of piping structures in industries of construction, chemical, shipbuilding, engineering machinery, metallurgy, electric power etc. It is quite convenient to machine above mentioned workpieces without additional operational computing and programming but simply input the data of intersection position, hole position and bevel.

技术参数 Technical Parameters			
控制轴数 Axis	2-6轴 2-6 axis	切割外径 OD	50-1500(mm)
切割长度 Length	2000-18000(mm)	切割厚度 Thickness	5-60(mm)
最大载重 Max. payload	8000(KG)	割炬组数 Torch No.	等离子/火焰 Plasma/Oxy-fuel
切割速度 Cutting speed	80-2500(mm/min)	空行速度 Idle speed	0-10000(mm/min)
切割方式 Cutting method	等离子/火焰 Plasma/Oxy-fuel		
切割坡口 Bevel	V/Y $\pm 45^\circ$ (等离子 Plasma)、 $\pm 60^\circ$ (火焰 Oxy-fuel)		
坡口规范 Bevel standard	美国AWS/ 定角/变角 AWS/fixed bevel/adjustable bevel		

集成料库式激光切割机

Integrated warehouse laser cutting machine



- 自动完成板材的上料、切割和下料，实现单一规格板材的批量连续加工，显著提升了加工效率，降低了综合生产成本
- 由多层料库系统、多台激光切割主机、自动上/下料系统组成，大大提高了劳动生产效率和钣金工厂的自动化水平，促进制造业转型升级
- 可进行多品种多规格板材的批量加工，并可与生产管理系统实现通讯和数据共享
- 可根据需要选配工件分拣系统
- Automatically complete the feeding, cutting and blanking of sheet metal, realize the batch continuous processing of single specification sheet metal, significantly improve the processing efficiency and reduce the comprehensive production cost
- It is composed of multi-layer material storage system, multiple laser cutting host, automatic loading/unloading system, which greatly improves the labor production efficiency and the automation level of sheet metal factory, and promotes the transformation and upgrading of manufacturing industry
- It can carry out batch processing of multiple varieties and specifications of plates, and can realize communication and data sharing with production management system
- The workpiece sorting system can be selected according to the need

名称 Name	单位 unit	HX3015	HX4020	HX6020
加工范围 Processing range	mm	3000 × 1500	4000 × 2000	6000 × 2000
X轴行程 X-axis stroke	mm	1550	2050	2050
Y轴行程 Y-axis stroke	mm	3050	4050	6050
加速度 Acceleration	G	1.5	1.5	1.5
定位精度 Positioning accuracy	mm	± 0.03	± 0.03	± 0.03
重复定位精度 Repeated positioning accuracy	mm	± 0.02	± 0.02	± 0.02
激光发生器功率 Laser generator power	W	1000--30000		

全自动激光切管机

Automatic laser pipe cutting machine

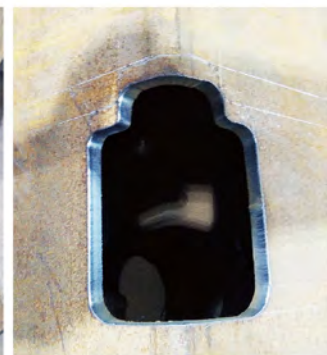


- 全自动上下料，实现管材批量高效率加工
 - 高刚性机械结构，先进的卡盘夹紧系统，智能辅助托料，高效率和高品质切割的保证
 - 数字控制系统、精密传动部件和激光应用技术的深度融合，超越各类传统管材加工方式
 - 全防护崭新外观，双重排风除尘设计，专业的管材切割软件
- Automatic loading and unloading, to achieve high efficiency batch processing of pipes
 - High rigidity mechanical structure, advanced chuck clamping system, intelligent auxiliary supporting material, high efficiency and high quality cutting guarantee
 - The deep integration of digital control system, precision transmission components and laser application technology transcends all kinds of traditional pipe processing methods
 - Full protection of new appearance, double exhaust dust removal design, professional pipe cutting software

名称 Name	单位 unit	HP6035	HP12035
加工范围 Processing range	mm	6200 × φ 20-φ 500 6200 × □20-□350	12200 × φ 20-φ 500 12200 × □20-□350
X轴行程 X-axis stroke	mm	6200	12200
Y轴行程 Y-axis stroke	mm	600	600
加速度 acceleration	G	1	1
定位精度 Positioning accuracy	mm	± 0.03	± 0.03
重复定位精度 Repeated positioning accuracy	mm	± 0.03	± 0.03
激光发生器功率 Laser generator power	W	1000—12000	

型材轮廓切割机

Profile Contour Cutting Machine





• 生产线整体 • Whole production line



• 上料 • Loading



• 切割 • Cutting



• 操作 • Operating



• 成品输出 • Finished products outputting

● 型材轮廓切割机 Profile Contour Cutting Machine

- 6轴~9轴联动的机器人系统
- 主要针对各种型钢如角钢、槽钢、H型钢、球扁钢等进行空间切割
- 可选择等离子或激光切割
- 6-9 axis linkage machining
- Mainly used for space cutting on various profiles such as angle iron, channel steel, h beam, bulb steel, etc.
- Optional configuration: Plasma or laser cutting

机器人切割

Robot cutting system

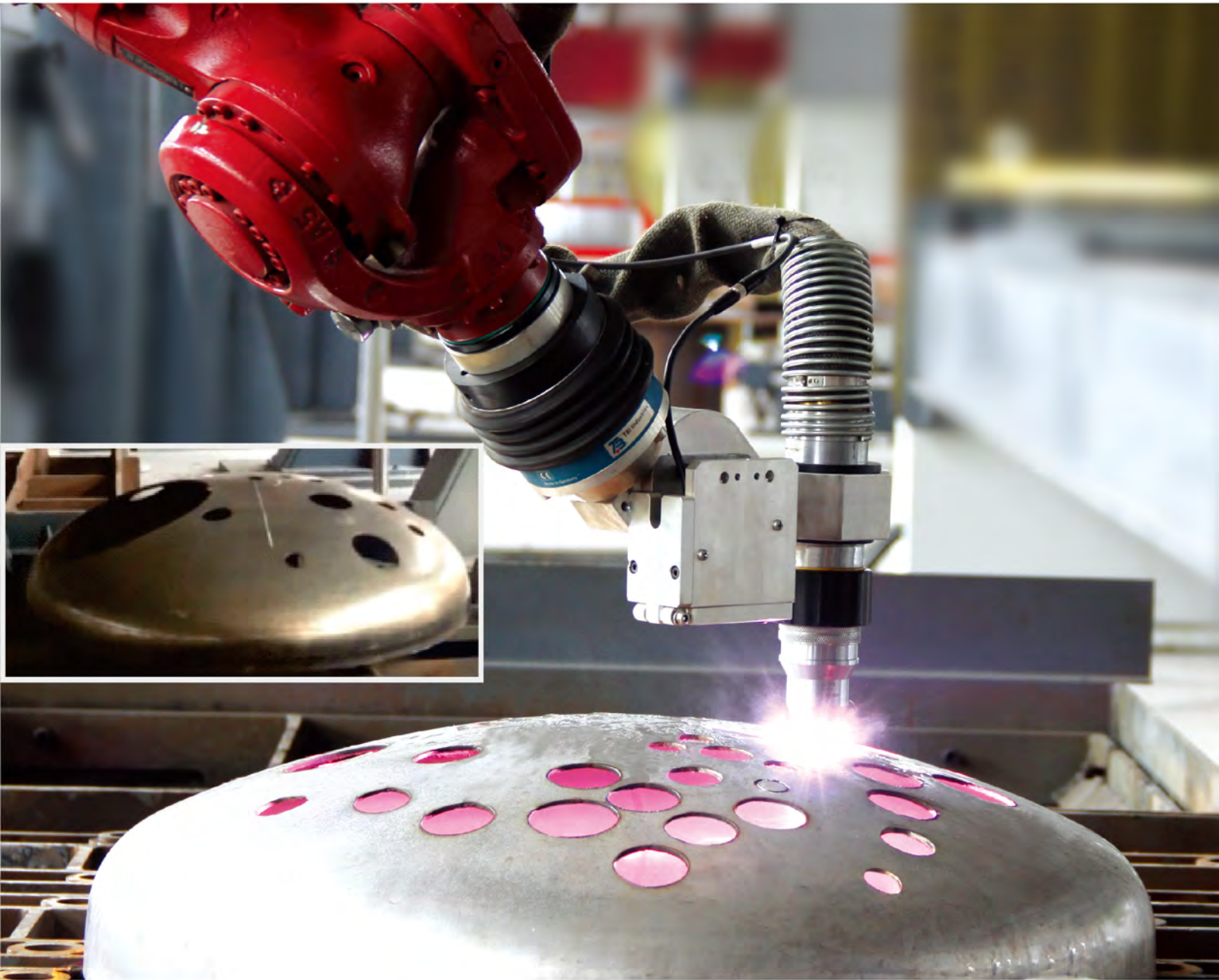


● 坡口切割 Beveling Cutting

- 6轴~7轴联动
- 机器人可以纵向行走
- 主要用于平面切坡口。可对不同厚度的直线、曲线进行“l”、“X”、“Y”、“V”、“K”的坡口切割
- 可选等离子或火焰切割
- 6-7 axis linkage machining
- Robot can travel longitudinally
- Mainly used for plane bevel cutting . Suitable for “l”、“X”、“Y”、“V”、“K” shaped lines and curves beveling cutting on sheets of different thickness.
- Optional configuration: Plasma or flame cutting processing

机器人封头切割

Beveling Head cutting



- **机器人封头切割**
Beveling Head Cutting

- 6轴~9轴联动机器人系统
- 可根据封头大小具体配置
- 主要用于压力容器封头切割
- 可选择等离子、火焰或激光切割
- 6-9 axis linkage machining
- Configurable according to the specific sizes of the heads
- Mainly used for pressure vessel's head cutting
- Optional configuration: Plasma、flame or laser cutting

三维多轴机器人封头激光切割机

3D multi-axis robot head laser cutting machine



- 采用德国KUKA六轴机器人和多个外部轴组合而成，离线编程更高效
- 具备二维和三维切割功能，加工柔性大，拓展性强，精度高，性能稳定可靠
- 超大加工范围，可定制夹具工装，零件输送线等非标装置
- Equipped with KUKA six axis robot and multiple external axes, offline programming is more efficient
- Equipped with 2D and 3D cutting functions, with great processing flexibility, strong scalability, high accuracy, and stable and reliable performance
- Ultra large processing range, customizable fixtures, parts conveying lines, and other non-standard devices

名称 Name	单位 unit	HR2000	HR3000	HR4000
加工封头范围 Processing head range	mm	Φ 2000	Φ 3000	Φ 4000
悬臂升降行程 Lifting stroke of cantilever	mm	0-2000	0-2000	0-2000
悬臂横向行程 Transverse stroke of cantilever	mm	0-1000	0-1000	0-1000
加速度 acceleration	G	0.8	0.8	0.8
机器人运动半径 Robot motion radius	mm	1000-2000	1000-2000	1000-2000
拓展外部轴 Extended external axis	个/piece	0-4	0-4	0-4
激光发生器功率 Laser generator power	W	1000—12000		

华恒Procut数控钻切坡口一体切割机

Huaheng Procut CNC drilling bevel integrated cutting machine



- 华恒Procut数控钻切坡口一体切割机是先进的板材加工系统，它集精细等离子切割、坡口、钻孔技术于一体，是一款高刚性、高精度的机型，所有部件都是按照高精度和长寿命的标准来配置的，并且能够与高档数控系统配套使用。
- Huaheng Procut CNC drilling bevel integrated cutting machine is an advanced plate processing system, it sets fine plasma cutting, bevel, drilling technology in one, is a high rigidity, high precision model, all parts are in accordance with the high precision and long life standards to configure, and can be used with high-grade CNC system.

有效切割宽度 Effective cutting width	500-8000mm	最大钻削马力 Maximum drilling horsepower	8kw (25hp) 1KW=1.36PS=1.34HP
有效切割长度 Effective cutting length	500-50000mm	最大转速 Maximum speed	6000 rpm
等离子最大边缘切割厚度 (碳钢/Carbon steel) Plasma maximum edge cutting thickness	80mm	最小转速 Minimum speed	200 rpm
等离子最大生产穿孔厚度 (碳钢/Carbon steel) Plasma Maximum production perforation thickness	45mm	最大钻削进给 Maximum drilling feed	10 m/min (400 ipm)
等离子穿孔质量切割厚度 (碳钢/Carbon steel) Plasma perforation Mass Cutting Thickness	35mm	最大钻削扭矩 Maximum drilling torque	200 Nm (150 ft-lb)
等离子切割速度 Plasma cutting velocity	0-6000mm/min	最大钻削孔径 (合金刀片钻头) Maximum drilling bore	35mm
等离子割炬升降距离 Plasma cutting torch lift distance	245mm	最大刀具直径 Maximum tool diameter	35mm
整机运行速度 Overall operating speed	0-24000mm/min	最大钻削深度 Maximum drilling depth	100mm
设定速度误差 Set speed error	≤ ± 5%	最大钻孔压力 Maximum drilling pressure	11000 N (2500 lbf)
自动调高精度 Automatic high precision	≤ ± 0.2mm	最大夹紧力 Maximum clamping force	12000 N (2700 lbf)
平面坡口形式 Flat groove form	V/Y/X/K型坡口	自动换刀装置 Automatic tool changing device	6个刀具
封头坡口形式 Head groove form	V型坡口	冷却系统 Cooling system	外冷却或雾化液体内部冷却 External cooling or atomized liquid internal cooling

数控系统

CNC system

• EDGE Connect

系统参数:

System Configuration:



EDGE Connect(Turnkey)

处理器	英特尔四核J1900
处理器速度	2.0Ghz
操作系统	Windows embedded 8/10
内存	4GB RAM
网口	1 RJ-45 Ethernet接口
海宝专用接口	无
USB接口	2 USB 2.0
串口	无
无线网络	符合802.11G和802.11N标准
硬盘	120G 固态硬盘SATA接口
显示器	482.6mm(19英寸)液晶声波触摸屏

EDGE Connect(Turnkey)

Processor	J1900 Intel's quad-core
Speed of the processor	2.0Ghz
Operating system	Windows embedded 8/10
Network Port	1 RJ-45 Ethernet interface
The treasure dedicated	None
Serial Port	None
Wireless networking	In line with the 802.11G and 802.11N standard
Hard drive	120G solid-state drive SATA interface
Display	482.6mm (19 inches) of liquid acoustic wave touch screen

海宝数控系统

Hypertherm CNC system

• Mini EDGE Connect



Mini EDGE Connect CNC

处理器MCU:	英特尔四核J1900Quad-core
内存RAM:	4GDDR3-1600
固态硬盘SSD:	120GB IntelS35002.5"
无线网卡WiFi:	Intel AC7260
前面板:	HDMI+ 4xUSB+LAN
后面板:	DVI+EtherCAT+ON/OFF&电源接口
外壳:	铝制
散热:	被动散热, 无需风扇

Mini EDGE Connect CNC

Processor MCU :	IntelQuad-coreJ1900
RAM:	4GDDR3-1600
SSD:	120GB Intel S35002.5"
WiFi:	IntelAC7260
Frontpanel:	HDMI+ 4xUSB+LAN
Rearpanel:	DVI+EtherCAT+ON/OFF&Powerinterface
Shell:	Aluminum
Heatdissipation:	Passiveheatdissipation,no fanrequired



• HH5100

硬件配置:

CPU卡	Intel 多线程低功耗CPU
显示器	15寸高分辨率
内存	1G, 2G/4G 可选
硬盘	32G SSD, 64G/120G可选
操作系统	Windows7
控制轴数	2轴插补, X和Y
控制模式	脉冲模式, 脉冲+方向, 正反脉冲
支持的遥控器	IO和BCD编码
操作方式	键盘、鼠标或触摸屏
切割模式	火焰/等离子/喷粉划线

Hardware configuration:

CPU :	Intel multi-threading low power consumption CPU
Display:	15 inch high definition
Memory:	1G, 2G/4G optional
Harddisc:	32G SSD, 64G/120G optional
Operating system:	Windows7
Control axes:	2 axes Interpolation, X&Y
Control mode:	Pulse+direction, positive and negative pulse
Remote control:	IO and BCD coding
Operating mode:	Keyboard, mouse or touch screen
Cutting mode:	Oxy-fuel / Plasma / Power marking

• HH2300

硬件配置:

显示器	10.4寸800*600高分辨1600万色彩色高亮度液晶屏
内存	64M SDRAM
用户程序空间	256M
主频	400MHZ系统主频
USB	USB1.1接口前置,至少支持16GB U盘
键盘	PCB贴膜键盘
机箱	全钢结构完全屏蔽,真正能够做到防电磁辐射、抗干扰、防静电

Hardware configuration:

Display:	10.4 inch 800*600, high definition 16 million colors and high brightness LCD
Memory:	64M SDRAM
Program space:	256M electronic hard disk
CPU frequency:	400MHZ
USB:	USB 1.1 front interface, at least 16GB U disk supportable
Keyboard:	PCB keyboard
Chassis:	full-steel structure completely shielded which defends electromagnetic radiation, interference and static electricity



驱动

Driving unit

- 驱动

高性能交流伺服电机，运行速度可达
12m/min或24m/min，有很高的加速度。

- Driving unit

High performance AC servo motor with high acceleration
and running speeds up to 12m/min or 24m/min



割炬升降

Torch lifter

- 割炬升降

HH300等离子割炬升降挂架
升降行程250mm

- Torch lifter

HH300 Plasma Torch Lifter
Up/down stroke 250mm

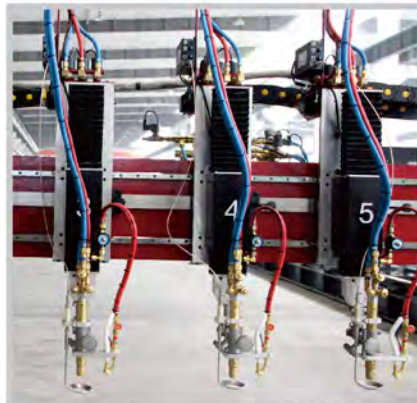


- 割炬升降

HH200割炬升降挂架
升降行程200mm

- Torch lifter

HH200 torch suspension
Up/down stroke 200mm



直线三割炬

Triple-torch straight cutting head



- 直线三割炬

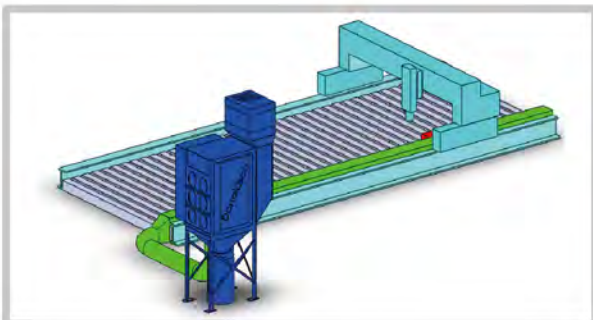
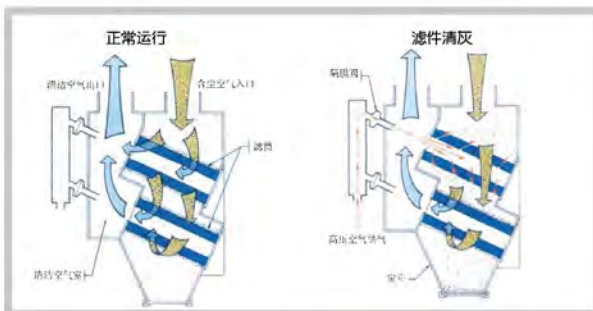
用于直线V、Y、K型坡口切割
角度调整 0° – 45°
板条宽度50–130mm
可选择机械式或电容自动调高系统

- Triple-torch straight cutting head

For V, X, Y and K type straight bevel cutting
Tilting Angle: 0° – 45°
Strip width 50–130mm
Optional mechanical or auto capacitive height sensing

除尘设备工作台

Fume Extraction Table



- 除尘设备工作台

切割时，会释放出大量的铁、氧化铁及有害的镍铬粉尘。这些粉尘会由工作台捕捉并过滤。滤芯材料可过滤小到 $0.3\mu\text{m}$ 的颗粒，过滤效率可达99.97%。滤芯配有自动清洁装置。

- Fume Extraction Table

Lots of dust of iron, iron oxide and harmful CrNi will be released during cutting. Those dust can be captured by the fume extraction table and filtered by the duster. Dust up to $0.3\mu\text{m}$ is filterable and the filter efficiency can reach 99.97%. The self-cleaning device helps filter to be functional.



OTTO ARC



CUT 200/CUT 300 等离子切割机 Plasma Power Source

- 采用全焊接结构机架，坚固耐用，美观大方，操控便捷。
- 切割速度快、精度高。切割口小、整齐，无掉渣现象。
- 适合低碳钢、铜、铝、钛合金、镀锌板等金属板材的切割。
- 专利智能过压与缺相保护，故障率与维护成本低。
- 负载持续率高，可长时间运用于工业场所。
- 易损件使用寿命长，运行成本低，电源效率高，耗电量低。
- It adopts fully welded frame, which is durable, beautiful and easy to operate.
- Fast cutting speed and high precision. The cut surface is small and neat without slag dropping.
- Suitable for cutting low carbon steel, copper, aluminum, titanium alloy, galvanized sheet and other metal plates.
- Patent intelligent overvoltage and open phase protection, low failure rate and maintenance cost.
- With high load duration, it can be used in industrial places for a long time.
- Long service life of consumables, low operation cost, high power efficiency and low power consumption.

参数名称 Items	单位 Unit	CUT 200 参数 Parameters	CUT 300 参数 Parameters
输入电压、频率 Input voltage & Frequency	V/Hz	380 ± 10% 50/60Hz	380 ± 10% 50/60Hz
输入电流 Input current	A	78	110
输入功率 Input power	KW	41.8	65.2
输入容量 Input capacity	KVA	51	73
空载电压 No-load voltage	V	360	360
功率因素 Power factor	-	0.82	0.92
环境温度 Ambient temperature	°C	-10 °C 和+40 °C	-10 °C ~+40 °C
负载持续率 Load duration	-	100% (40 °C)	100% (40 °C)
切割电流电压 Cutting current and voltage	A/V	200/200	300/200
电流调节范围 Current regulation range	A	40-200	50-300
引弧方式 Arc striking mode	-	非接触引弧/Non contact arc striking	非接触引弧/Non contact arc striking
等离子气体 Plasma gas	-	空气/氮气/氧气 (Air / nitrogen / oxygen)	空气/氮气/氧气 (Air / nitrogen / oxygen)
保护气体 Protective gas	-	空气/氮气 (Air / nitrogen)	空气/氮气 (Air / nitrogen)
气体压力 Gas pressure	Mpa	0.6-0.8	0.6-0.8
冷却箱容量 Cooling tank capacity	L	10	10
冷却液容量 Coolant capacity	L/min	4	4
质量切割厚度 (低碳钢) Quality cutting thickness (mild steel)	mm	6-25	30
最大穿孔厚度 (低碳钢) Maximum piercing thickness (mild steel)	mm	32	45 (边缘起弧/Edge arcing)
绝缘等级 Insulation class	-	F	F
冷却方式 Cooling mode	-	水冷/Water cooling	风冷
外壳防护等级 Enclosure protection class	-	IP215	IP215
外形尺寸 (长x宽x高) Dimensions (L x W x H)	mm	810x476x945	868*625*960
重量 Weight	Kg	120 (未装冷却液/without coolant)	185

注：上表中质量切割及穿孔厚度是由本产品所有组件配套使用得出的参数。尽管本电源可切割更厚的材料，但建议切割工作量的80%以上材料厚度不应超过25mm，超过时尽量从工件边缘开始切割，除非必须穿孔，建议最大穿孔厚度不超过30mm。

Note: the quality cutting and perforation thickness in the above table are the parameters obtained from the matching use of all components of the product. Although this device can cut thicker materials, it is recommended that the material thickness of more than 80% of the cutting workload should not exceed 25 mm. If it exceeds, it should be cut from the edge of the workpiece as far as possible. Unless it is necessary, it is recommended that the maximum piercing thickness should not exceed 30mm.

Hypertherm® 海宝

XPR170™ / XPR300™

机用等离子切割技术一次史无前例的突破，诠释等离子切割新概念。

The new XPR series represents the most significant advance in mechanized plasma cutting technology. This next generation system redefines what plasma can do.



新一代精细等离子电源

		XPR170		XPR300	
型号 Model		40 mm	(氩气辅助) (argon-assist)	40 mm	(氩气辅助) (argon-assist)
低碳钢 Mild Steel	穿孔能力 Pierce capacity	40 mm	(氩气辅助) (argon-assist)	40 mm	(氩气辅助) (argon-assist)
		35 mm	(标准氧气) (standard O ₂)	35 mm	(标准氧气) (standard O ₂)
	切断能力 Severance	60 mm		80 mm	
不锈钢 Stainless Steel	穿孔能力 Pierce capacity	22 mm		38 mm	
	切断能力 Severance	38 mm		75 mm	
铝 Aluminum	穿孔能力 Pierce capacity	25 mm		38 mm	
	切断能力 Severance	38 mm		50 mm	

业界领先的切割质量:

Industry-leading X-Definition cut quality

XPR将新技术与精心优化的工艺相结合，实现低碳钢、不锈钢和铝材的新一代X-Definition™切割品质，进一步提升了HyDefinition®的切割质量。

The XPR advances HyDefinition® cut quality by blending new technology with refined processes for next generation, X-Definition™ cutting on mild steel, stainless steel and aluminum.

优化生产效率，降低运行成本

Optimized productivity and reduced operating costs

精心设计的系统优化，简单易用

Engineered system optimization, Ease of use

先进的工艺控制和交付

Advanced process control and delivery

可在Core™自动自体箱、Vented Water Injection™(VWI)高级气体箱和Optimix™全能自动气体箱这三款控制箱中进行选择。每款控制箱都进一步增强了不锈钢和铝材切割能力。低碳钢切割质量极为出色。所有控制箱均可通过CNC控制器进行全面控制，提高了生产效率和易用性。

Three console options—Core™, Vented Water Injection™ (VWI) and Optimix™—offer unmatched mild steel cut quality with each console delivering successively enhanced cutting capabilities on stainless steel and aluminum. All consoles can be fully controlled through the CNC for high productivity and ease of use.



Vented Water Injection™(VWI)
高级自动气体控制箱

Core™自动气体控制箱

Optimix™全能自动气体控制箱

气体控制箱	切割气体	电流 (A)	切割厚度 (mm)	切割速度 (mm/min)	
低碳钢					
Core、VWI 和 Optimix	氧气等离子气体	30	0.5	5348	
	氧气保护气体		3	1153	
			5	521	
	氧气等离子气体	80	3	5582	
	空气保护气体		6	3048	
			12	1405	
	氧气等离子气体	130	3	6502	
	空气保护气体		10	2680	
			38	256	
	氧气等离子气体	170	6	5080	
	空气保护气体		12	3061	
			25	1175	
		50	267		
		300	12	3940	
			25	1950	
			50	560	
			80	165	
不锈钢					
Core、VWI 和 Optimix	氮气等离子气体	40	0.8	6100	
	氮气保护气体		3	2683	
			6	918	
VWI 和 Optimix	F5 等离子气体	80	3	4248	
	氮气保护气体		6	1916	
Optimix	氢气-氮气-氮气 等离子气体	170	12	864	
			10	1975	
			12	1735	
	氮气保护气体	300	38	256	
			12	2038	
			25	1040	
		50	387		
		75	162		
VWI 和 Optimix	氮气等离子气体	300	12	2159	
	水保护气体		25	1302	
			50	403	
铝					
Core、VWI 和 Optimix	空气等离子系统	40	1.5	4799	
			空气保护气体	3	2596
				6	911
	氮气等离子气体	80	3	3820	
			水保护气体	6	2203
				10	956
VWI 和 Optimix	氮气等离子气体	130	6	2413	
			水保护气体	10	1702
	氮气等离子气体	300	20	870	
			水保护气体	12	2286
		25	1302		
		50	524		
Optimix	氢气-氮气-氮气 等离子气体	300	12	3810	
			25	2056	
			50	391	

这并不代表完整的可用工艺或厚度列表。



HUAHENG

昆山华恒焊接股份有限公司
HUAHENG WELDING CO., LTD.

地址：江苏省昆山市博士路1588号 邮编：215347
Add: No.1588 Boshi Road, Kunshan, Jiangsu, P.R.China. PC:215347
Tel: 0512-81866666 Fax: 0512-57328188
E-mail: info@huahengweld.com www.huahengweld.com

昆山华恒切割系统有限公司
KUNSHAN HUAHENG CUTTING
SYSTEMS CO., LTD.

地址：江苏省昆山市吴淞江北路99号 邮编：215300
Add: No. 99 Wusongjiang North Road, Kunshan, Jiangsu, P.R.China PC: 215300
Tel: 0512-81866666 Fax: 0512-50139612